

Smart Entry Lab

PA Pivot Zones EA V1.0

User Manual / Public Sharing Guide



FREE TO USE • NOT FOR SALE • NOT FOR RESALE

VERY IMPORTANT

This EA is shared for free only. It is not allowed to resell, repackage, or claim as your own product for sale. It is designed mainly for Exness XAUUSDm 3-digit gold. Always test on demo before using any real account.

1. EA Overview

PA Pivot Zones EA V1.0 is an Expert Advisor for gold (XAUUSDm) based on Price Action + Pivot Zones. The system uses pivot-based support and resistance zones as market context, then waits for confirmation and places pending orders using an Entry Percent model such as 25 / 50 / 75 / 100% of the confirmation candle range.

This is not a grid system and not a martingale system. The purpose of this public version is to provide a free Smart Entry Lab EA that users can test with a clearly defined risk framework. Backtest results are reference data only, not a promise of future profit.

2. Recommended Usage Conditions

Item	Recommended Value
Broker	Exness only
Symbol	XAUUSDm / Gold 3-digit
Recommended Base Lot	0.01
Cent Account	2,000 USC
Standard Account	2,000 USD
Logic Timeframe	H4
Attach Chart	Can be attached to M5 / M15 / H4; core logic uses H4
Distribution	Shared for free / Not for sale / Not for resale

3. How to Install on MT5

1. Open Exness MT5.
2. Go to File > Open Data Folder.
3. Open MQL5 > Experts.
4. Copy PA Pivot Zones V1.0.ex5 into the Experts folder.
5. Restart MT5, or right-click Expert Advisors and select Refresh.
6. Drag the EA onto an XAUUSDm chart.
7. Enable Algo Trading and make sure Allow Algo Trading is active.
8. Always start with a demo account first.

4. Input Settings

The public version intentionally keeps most inputs locked to prevent accidental changes that could distort the intended behavior. General users should mainly see and adjust only the Base Lot input.

Input	Recommended Value	Description
InpLots / Base Lot	0.01	Starting lot size. Use together with the recommended capital guideline.

Capital explanation

CENT: 2,000 USC means 2,000 units in a cent account, not 2,000 real USD. **STANDARD: 2,000 USD** means a standard account using real USD as the account currency.

5. Backtest Results Used for the Website

These results come from the MT5 Strategy Tester report provided for the website. They are reference data only and do not guarantee future performance.

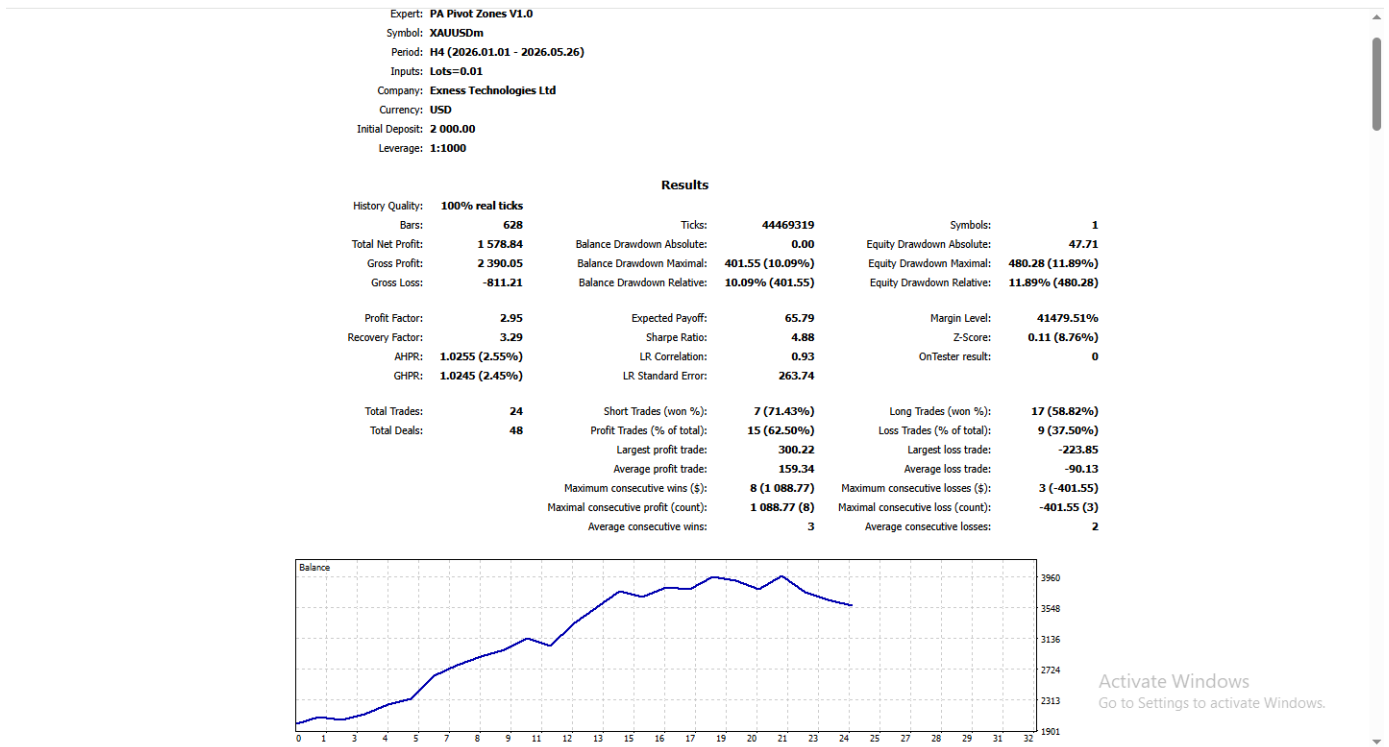
Metric	Result
Expert	PA Pivot Zones V1.0
Symbol	XAUUSDm
Period	H4 (2026.01.01 - 2026.05.26)
History Quality	100% real ticks
Initial Deposit	2,000.00 USD
Total Net Profit	1,578.84 USD
Profit Factor	2.95
Recovery Factor	3.29
Equity Drawdown Maximal	480.28 USD (11.89%)
Total Trades	24
Profit Trades	15 (62.50%)
Loss Trades	9 (37.50%)

6. Reference Images

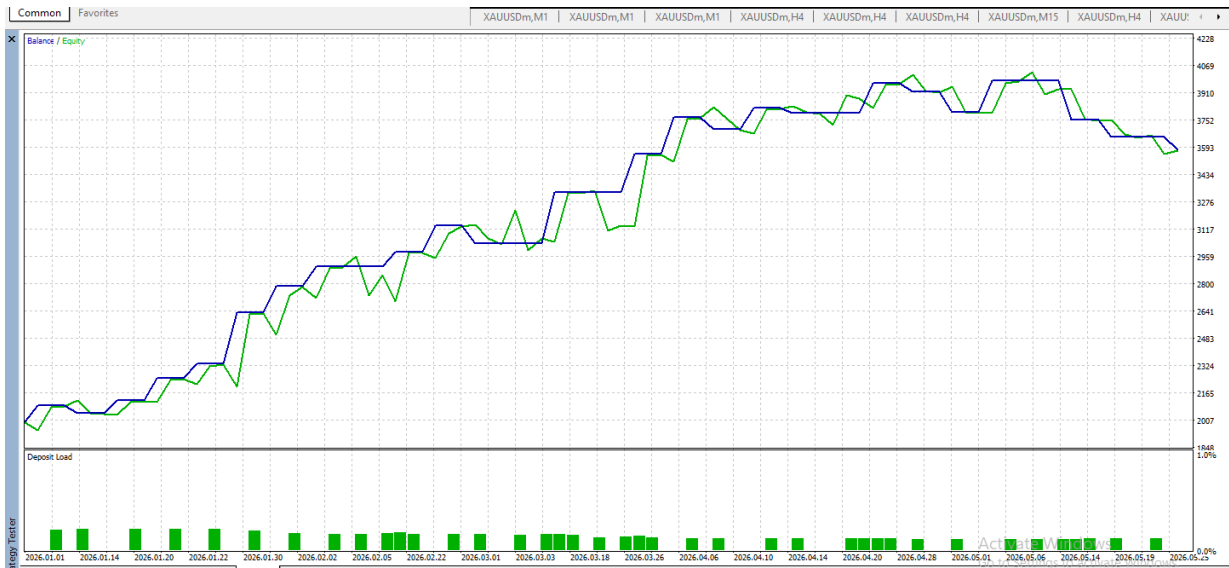
EA on chart with watermark



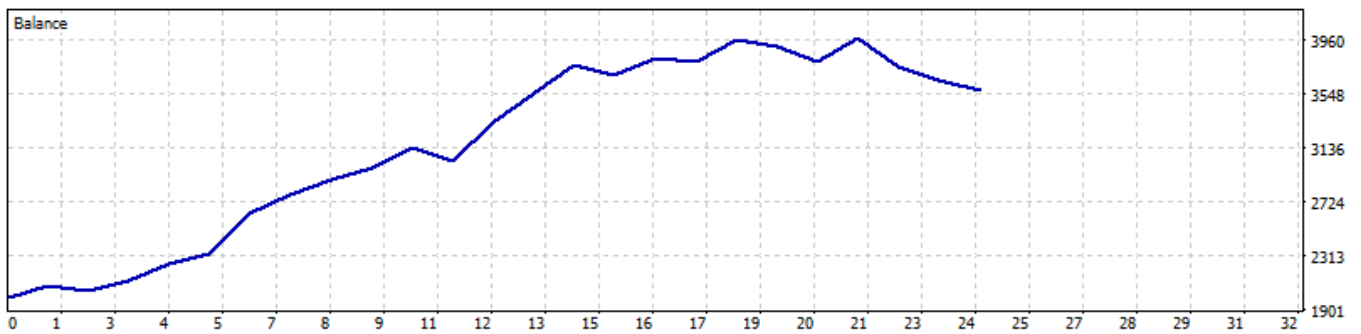
Backtest overview screenshot



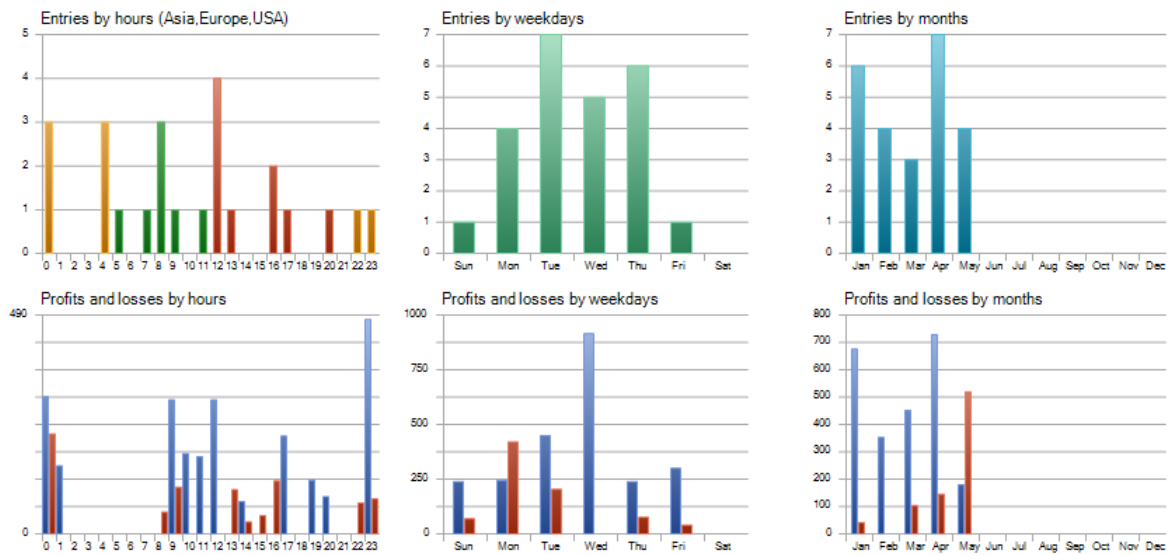
Balance / Equity curve from Strategy Tester



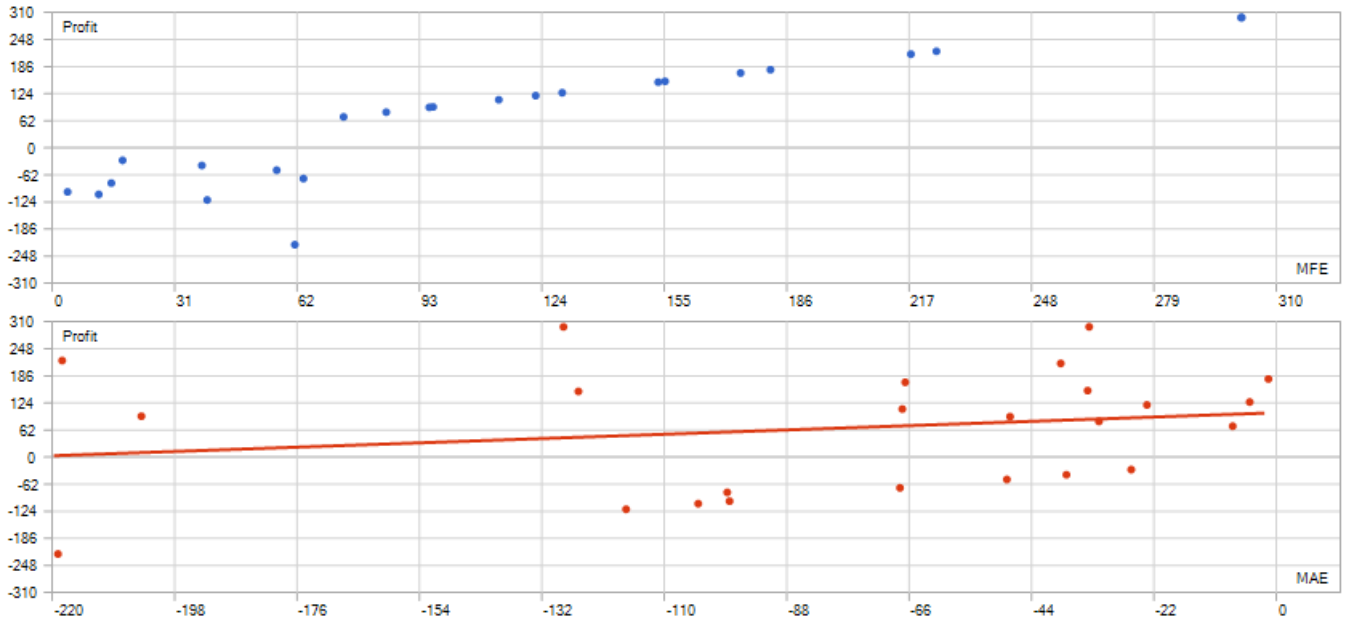
Balance curve



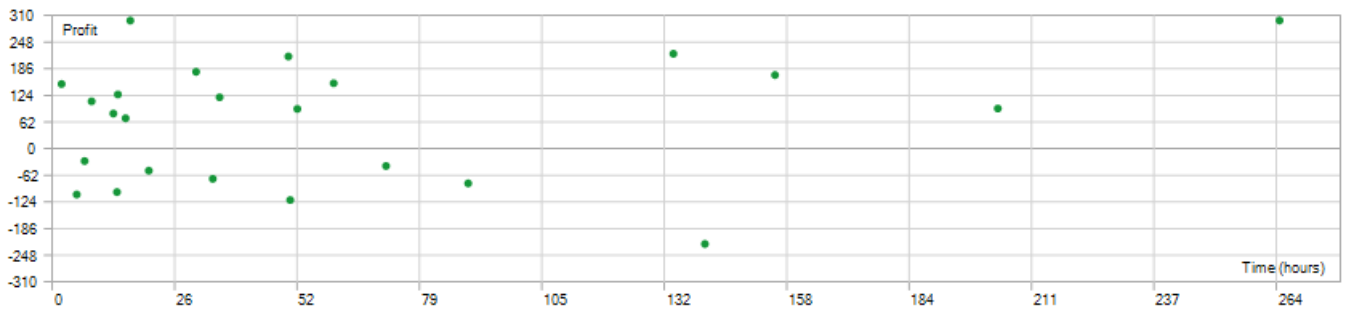
Hourly / weekday / monthly statistics



MFE / MAE analysis



Holding time analysis



7. Limitations and Risk

- Backtest results are not future results. Real market conditions may include slippage, spread changes, liquidity differences, and abnormal volatility.
- This EA is designed and labeled for Exness XAUUSDm 3-digit gold. If used with another broker or symbol, the entire system must be retested.
- Strong news or abnormal market conditions may make SL/TP behavior different from the backtest.
- Start with demo or capital that you can accept losing.
- Do not resell this EA or claim it as your own product for sale.

8. Recommended Website Labels

Label Type	Text
Capital label	BASE LOT 0.01 CENT: 2,000 USC STANDARD: 2,000 USD
Distribution label	NOT FOR SALE SHARED FOR FREE NOT FOR RESALE
Broker label	EXNESS ONLY (3-digit XAU)

9. FAQ

Can I use a Standard account?

Yes, but the reference capital should be 2,000 USD per Base Lot 0.01 as stated in this manual.

Can I use a Cent account?

Yes. The website should state 2,000 USC so users do not misunderstand it as 2,000 real USD.

Can I use another broker?

Not recommended. This public version is clearly labeled Exness only / 3-digit XAU. If used elsewhere, backtest and forward test again from zero.

Is this EA for sale?

No. It is a free sharing file from Smart Entry Lab and is not allowed to be resold.